

# APP Instructions For HONITURE Q6 Pro

## 1. Connect to WiFi

① Download app: Scan the QR code with your mobile phone or search in Google Play Store (Android devices) / App Store (iOS devices) to download the **HonySmart app**.

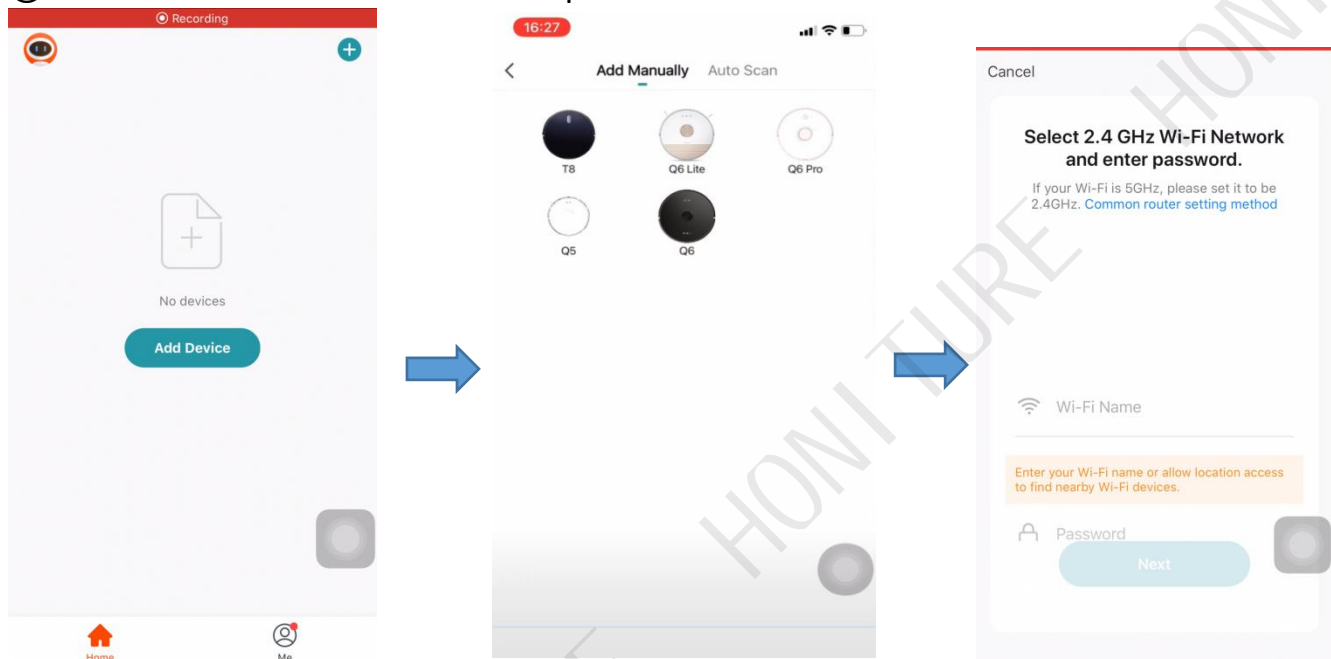


iOS: Compatible with Operating Systems 10 and higher.

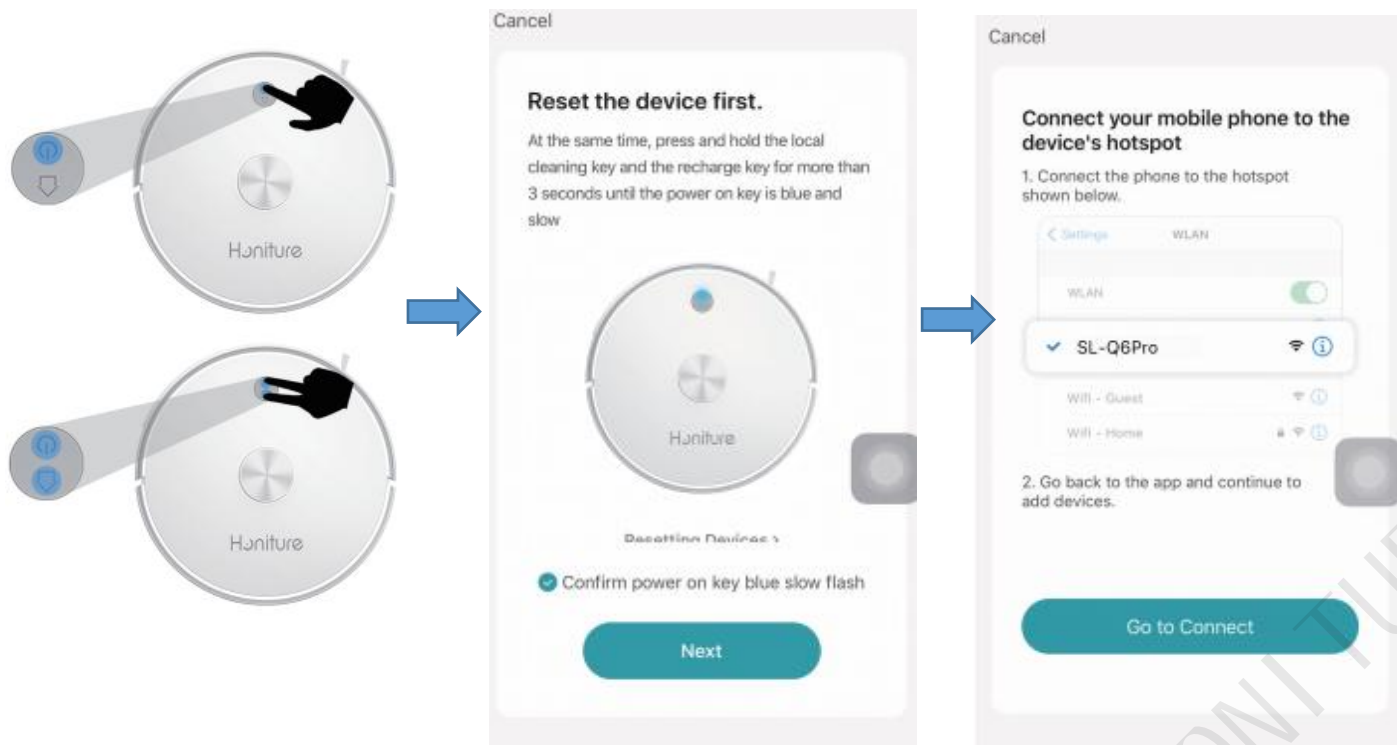


Android: Compatible with Operating Systems 8.0 and higher.

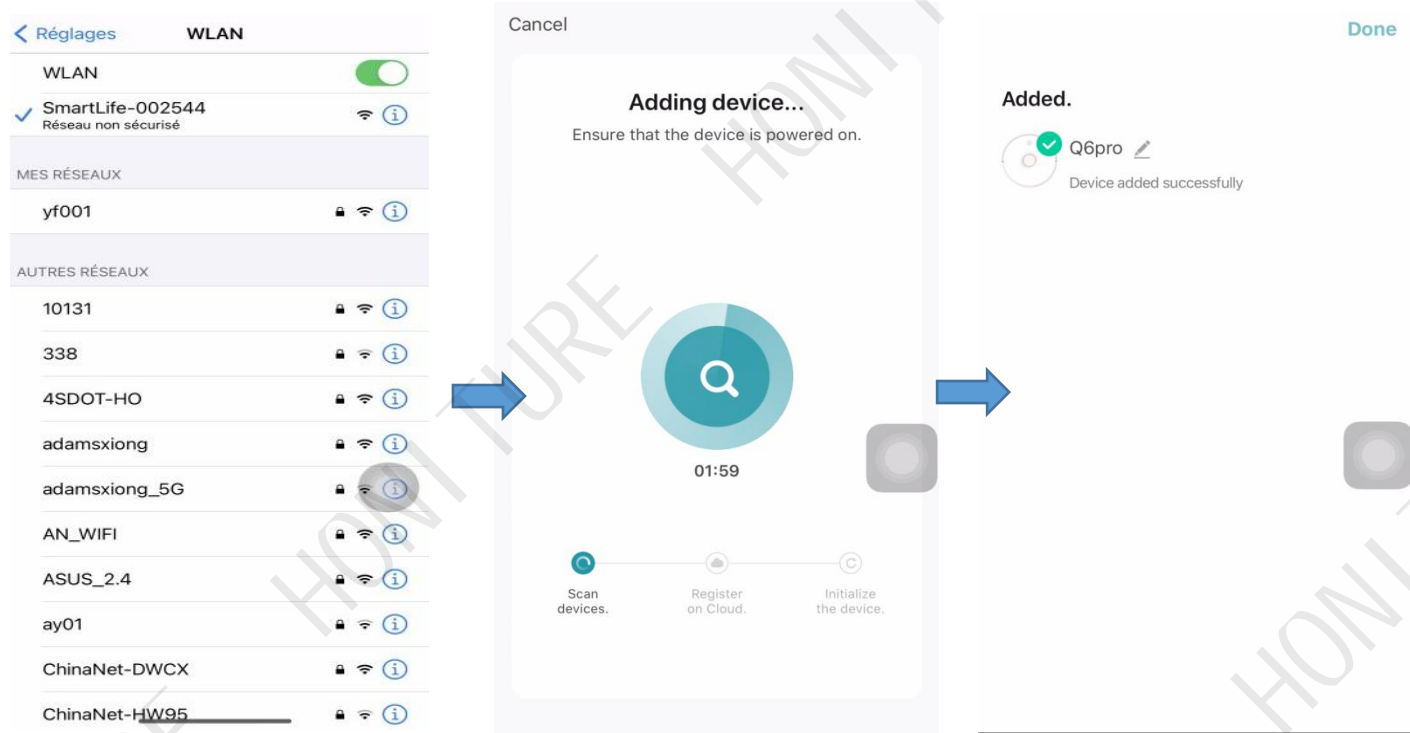
- ② Sign up your account and login.
- ③ Click “+” in the upper right corner on the page and choose Q6 Pro.
- ④ Enter the correct WiFi name and password then click “Continue”



- ⑤ Press and hold the Power button for 3 seconds to turn on the robot. The robot will say "Turn on".
- ⑥ Press and hold the Power button and Recharge button at the same time for at least 3 seconds, until you hear the robot saying "WiFi has been reset" and the Power button flashes slowly in blue.
- ⑦ Click “Confirm power on key blue slow flash” and click “Next”
- ⑧ Click “Go to connect” and it will automatically jump to the setting page of your mobile phone.



- ⑨ Go to the WiFi setting page and find the "**Smartlife-xxxxxx**" hotspot network and click to connect to it.
- ⑩ Return to the app and wait for the device adding to complete. Click "Done" to complete the connection.



## 2. Four modes: Pin n Go/ Zone/ Room/ Auto Cleaning

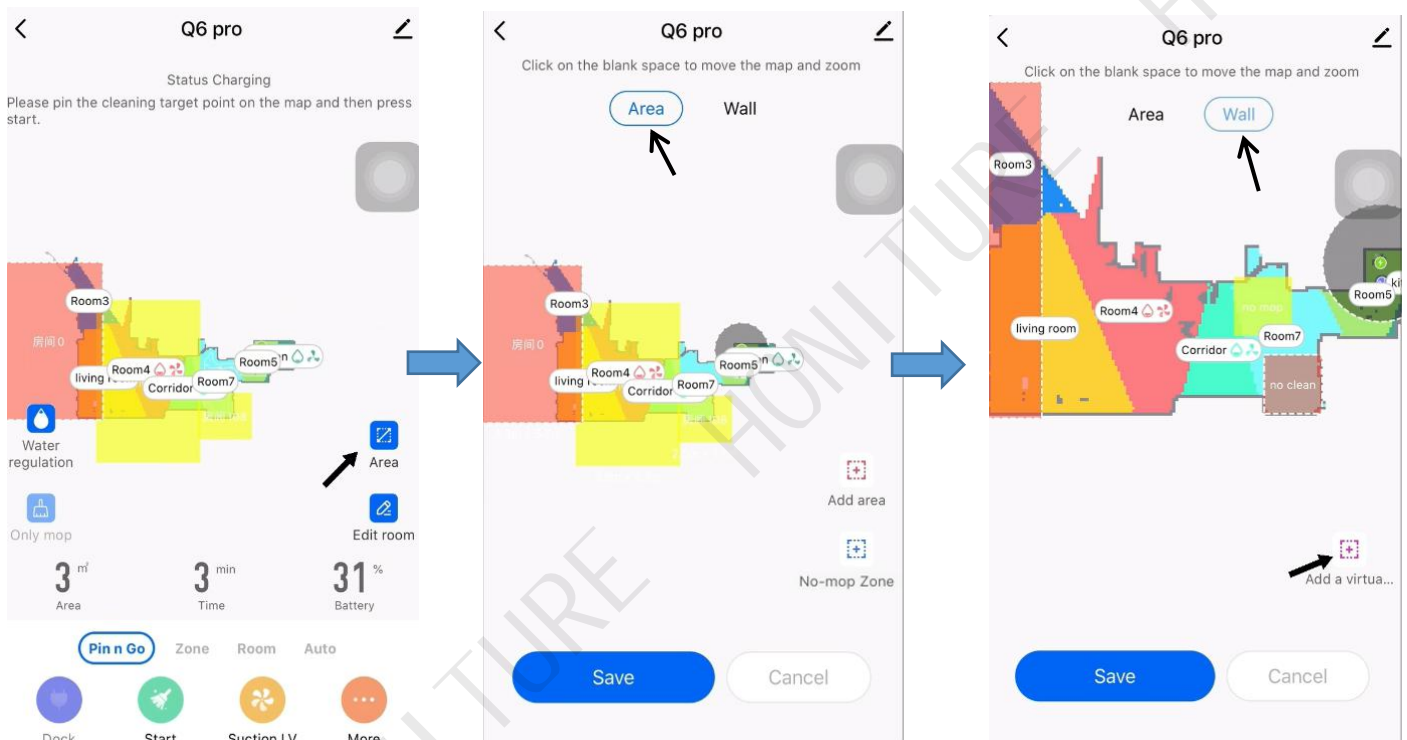
- ① Pin n Go Cleaning: When the robot is standing by or paused, you can specify a target point on the map in the app, and the robot will automatically plan a route to the specified location and clean the surrounding 1.6m \* 1.6m square area with itself as the center.
- ② Zone Cleaning: Click "Create area" to create the zone you want to clean and the robot will clean the zones selected on the map.
- ③ Room Cleaning: You can set the Room Cleaning in the app, the robot will clean the rooms you select. You also can select the suction.
- ④ Auto Cleaning: The robot will clean the whole house.

## 3. Virtual No-go/ No-mop area and virtual wall

**Firstly click "Forbidden Zone" :**

- ① Set up virtual No-go area/ no-mop area: Click "Add Forbidden Zone" in order to set up the no-go area. The robot will not enter the no-go area. (including cleaning mode and mopping mode)
- ② Set up virtual No-mop area: Click "No mop area" in order to set up the No-mop area. The robot will not enter the no-mop area in mopping mode.
- ③ Set up virtual wall: Click "Virtual Wall" and then click "Add a virtual wall " and move it.

**Don't forget to save them!**



## 4. Partition editing

**Please make sure that the robot vacuum has completed a cleaning, and the map will be automatically generated on the app before you can edit it.**

- ① Merge rooms : Select two adjacent and different colored areas to merge.
- ② Divide room : Select a single area split. Tap the screen and when a line appears, move two points to divide the room.
- ③ Area naming : Click "Area naming" and then select the room to modify the name.
- ④ Custom mode : Click the room to modify the mode. You can choose the suction power and water regulation.

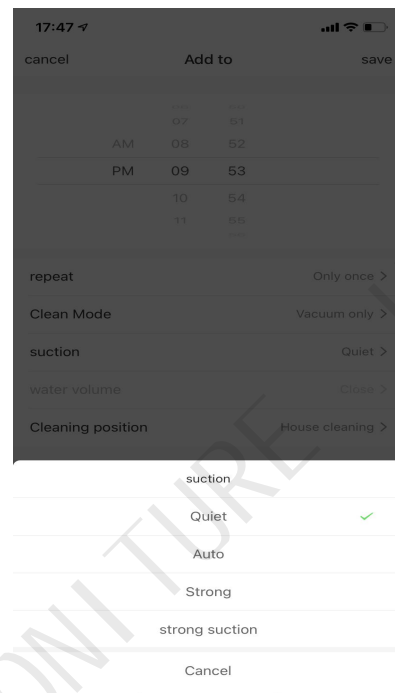
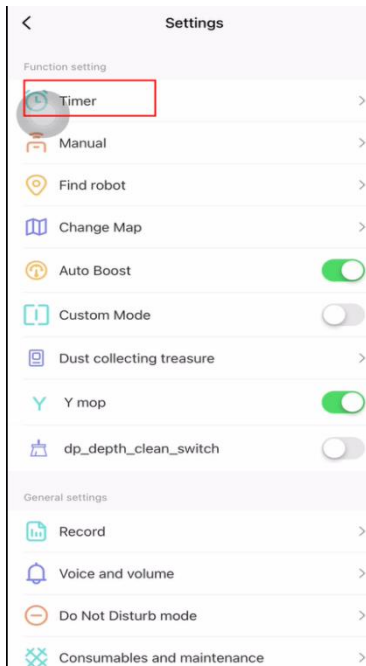
## 5. Only mop

- ① Only when the robot is equipped with a mopping cloth can the Only mop mode be turned on.
- ② The difference between turning on the only mop mode and not turning it on: In only mop mode, the robot will not clean, and you cannot choose the suction power.
- ③ There are three levels of water output to choose from.

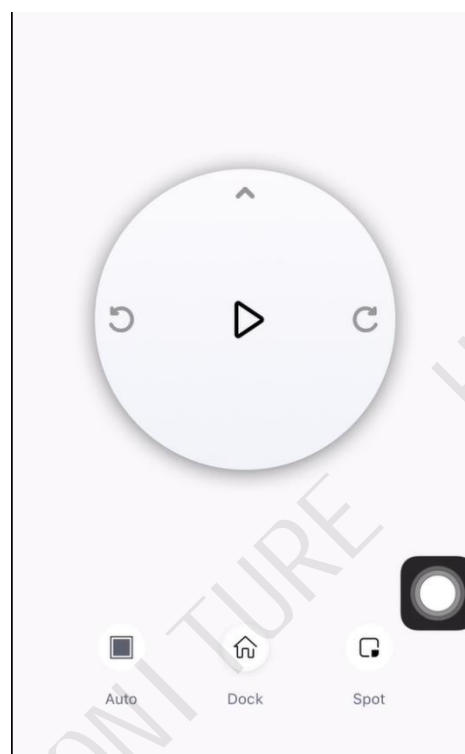
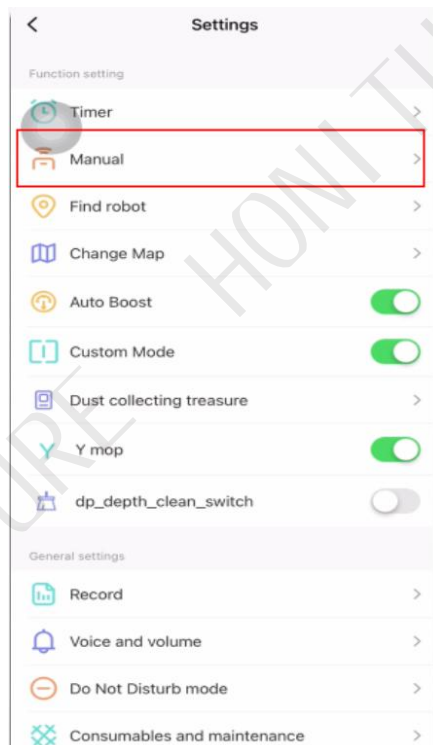
## 6. More function :

### Click "More" firstly

- ① Schedule: You can add a schedule in the app to set your desired schedule/ frequency/ selected area (auto cleaning or select specified room cleaning).

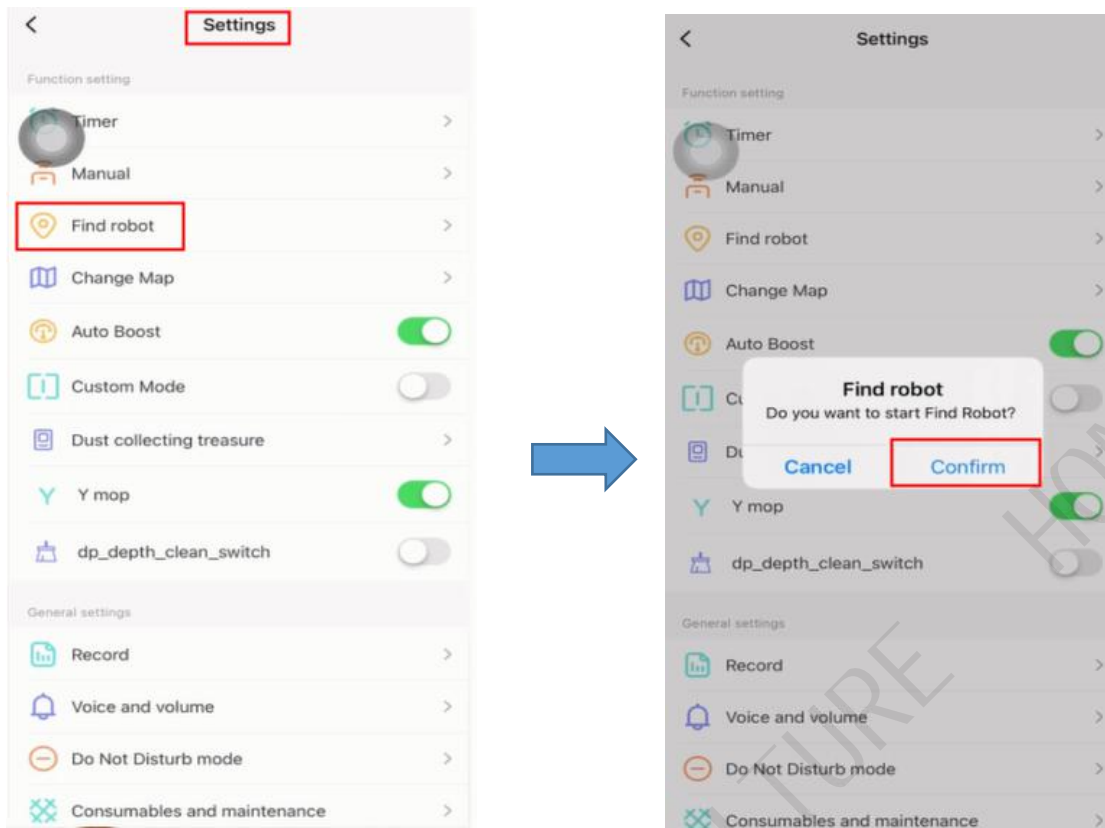


- ② Remote Control : You can manually control the robot by pressing and holding the arrow keys. Spot mode is set here.



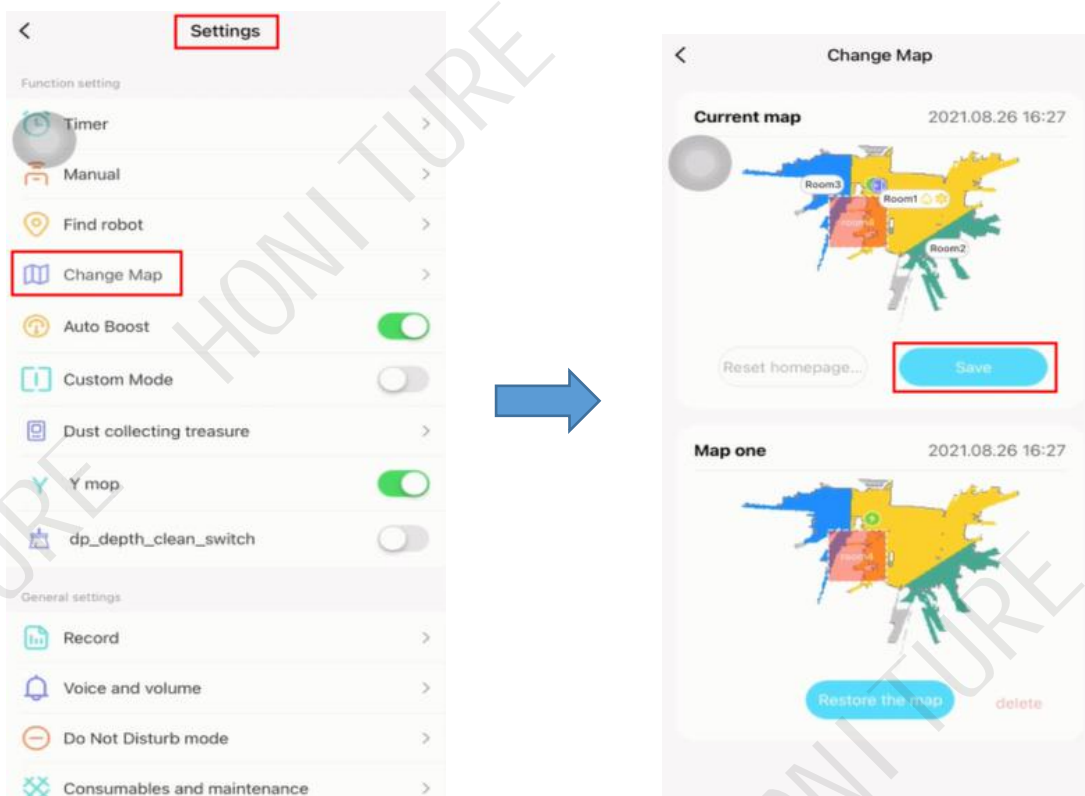
### ③ Find robot

Click "Confirm" and Robot will say " I'm here"



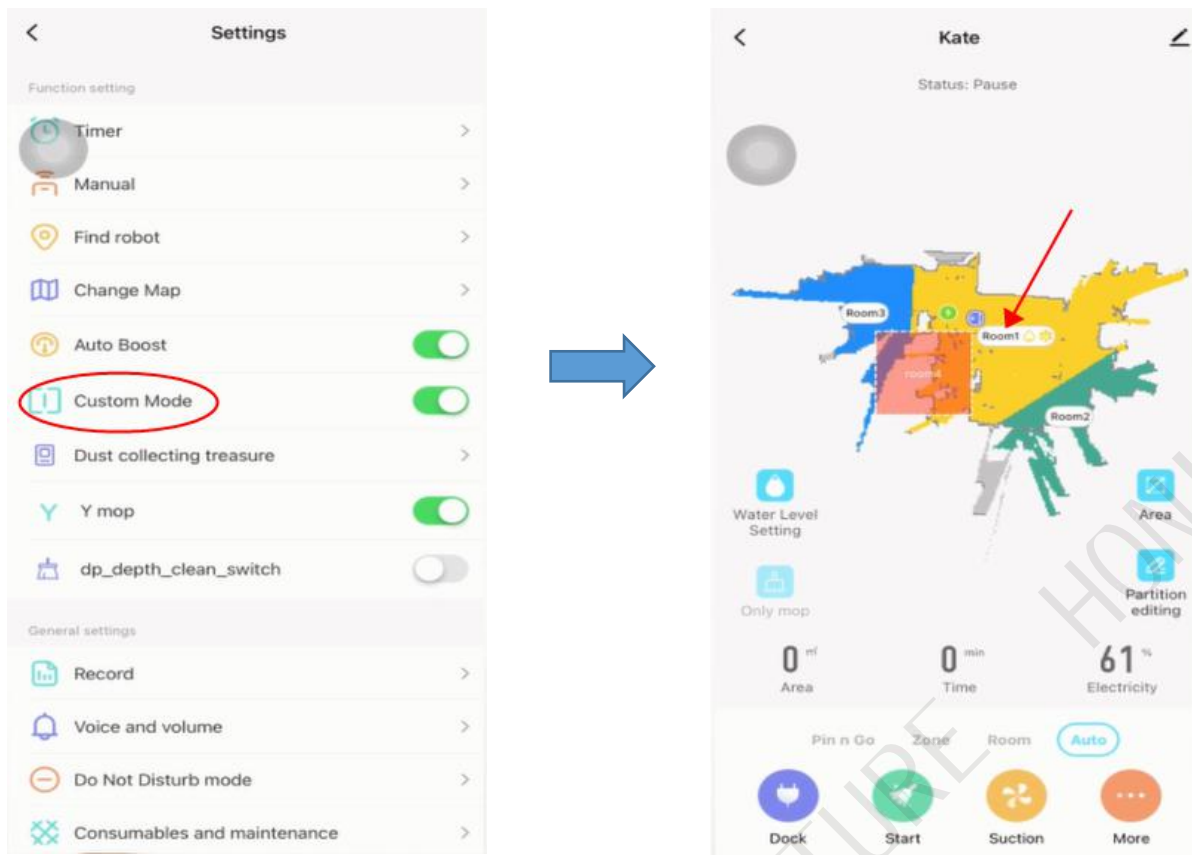
### ④ Change map

When the map is formed, you need to save the map manually. After saving it, please click "restore the map" when you want to use this map again.



### ⑤ Custom mode

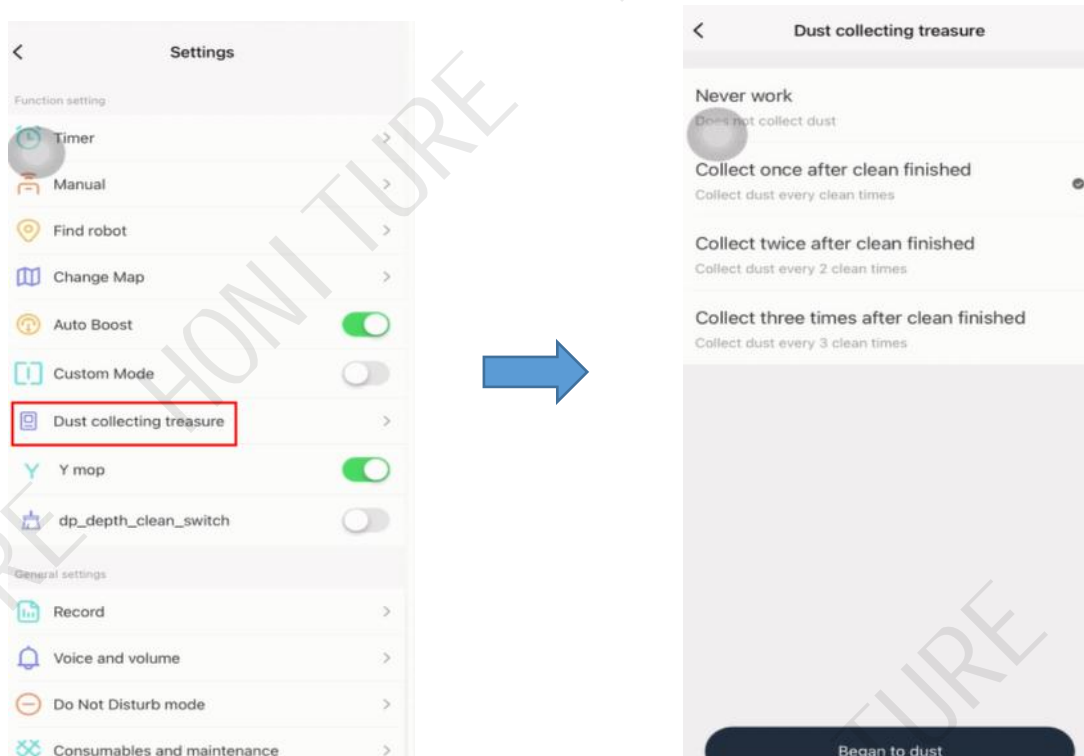
When custom mode is enabled, your settings for area, such as clean mode or time settings, are displayed on the map. When custom mode is disabled, they are not displayed on the map.



### ⑥ Dust collecting

You can set the dust collecting frequency here. There are 4 choices.

If you choose "Never", you need to click "Begin to dust" to collect the dust manually.

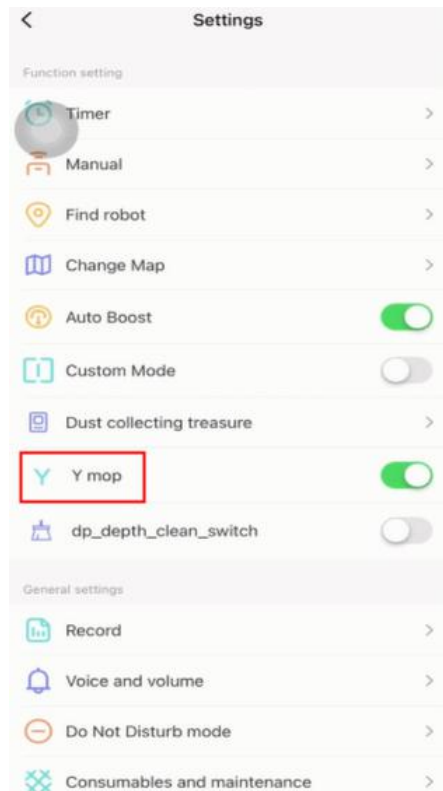




### ⑦ Y-mop

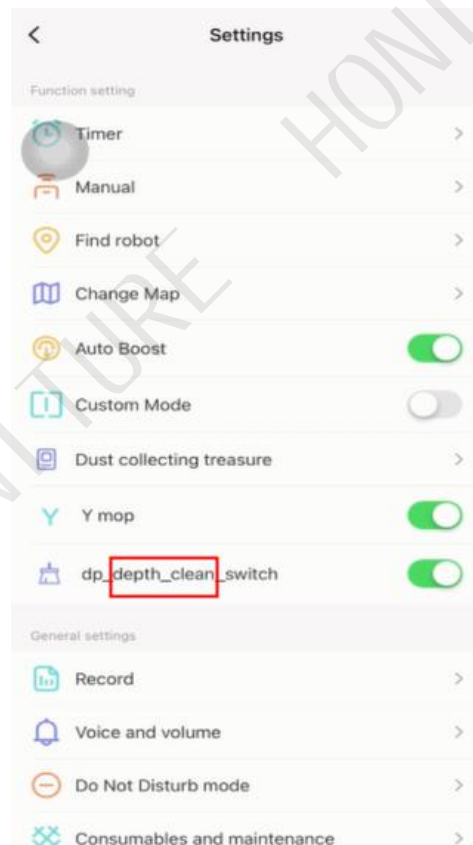
The robot cleaning path is Y-shaped.

Note: if the robot is in “Y-mode” and have not finish, this function can not be turned off.



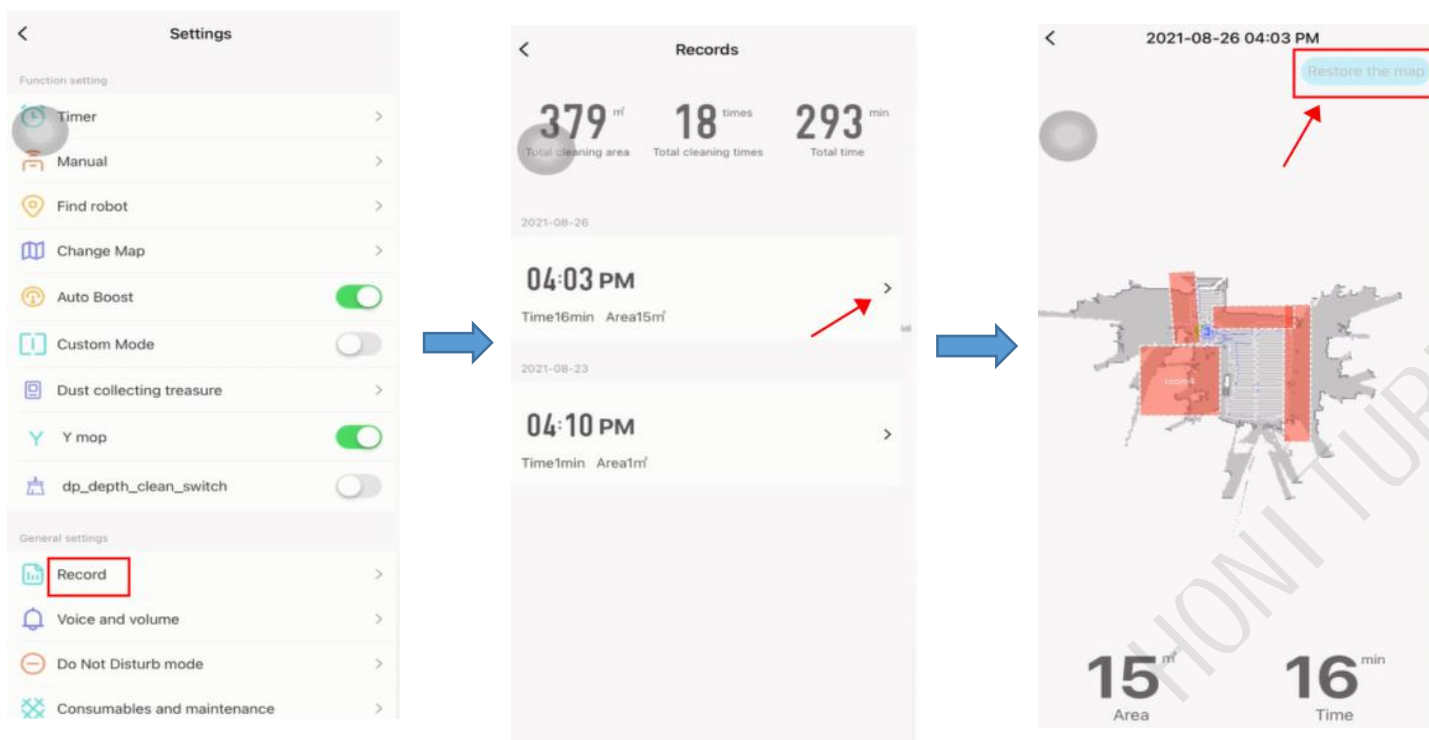
### ⑧ Depth clean

When you turn on this function, the robot will perform a double clean.



### ⑨ Record

You can view the cleaning records. You also can restore the map when the it's formed.



### ⑩ Voice and volume

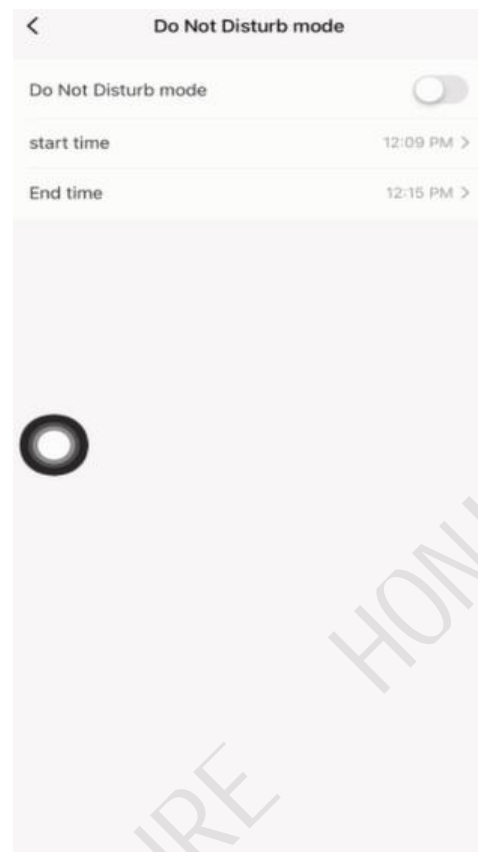
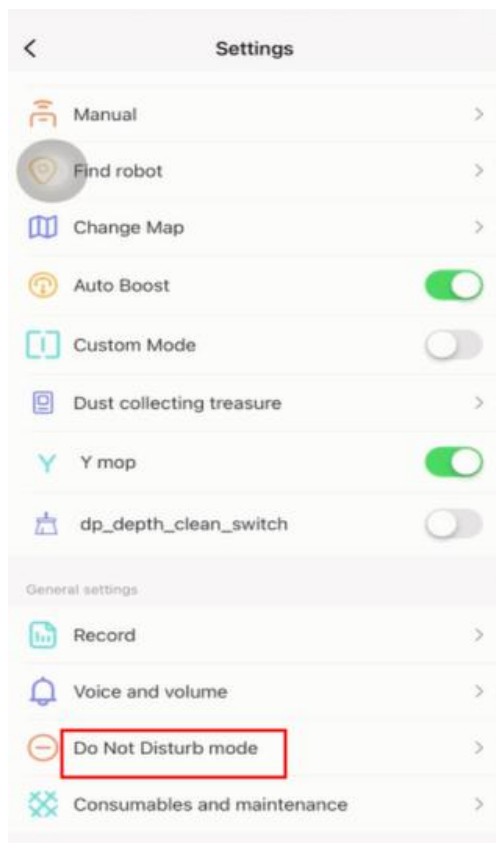
You can adjust the volume and download the language of the voice.





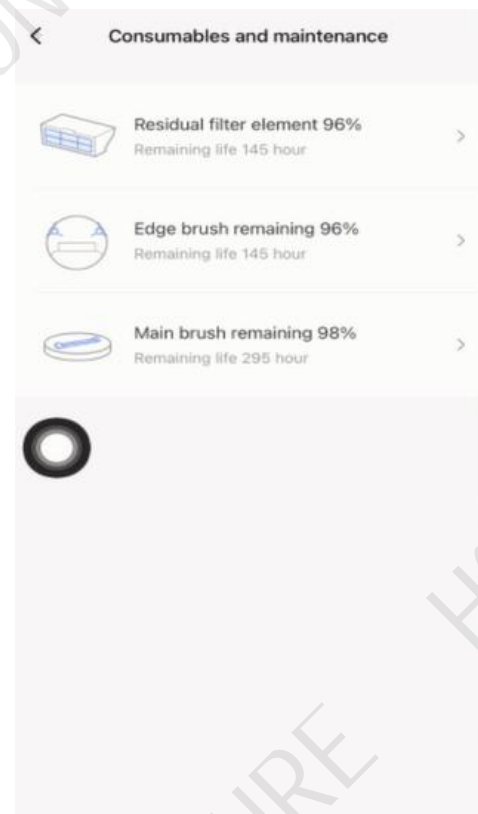
### ⑪ Do not disturb mode

If you turn on the “Do Not Disturb mode”, there will be no audio broadcast from the robot.  
You can set the start time and end time of “Do not disturb mode”.



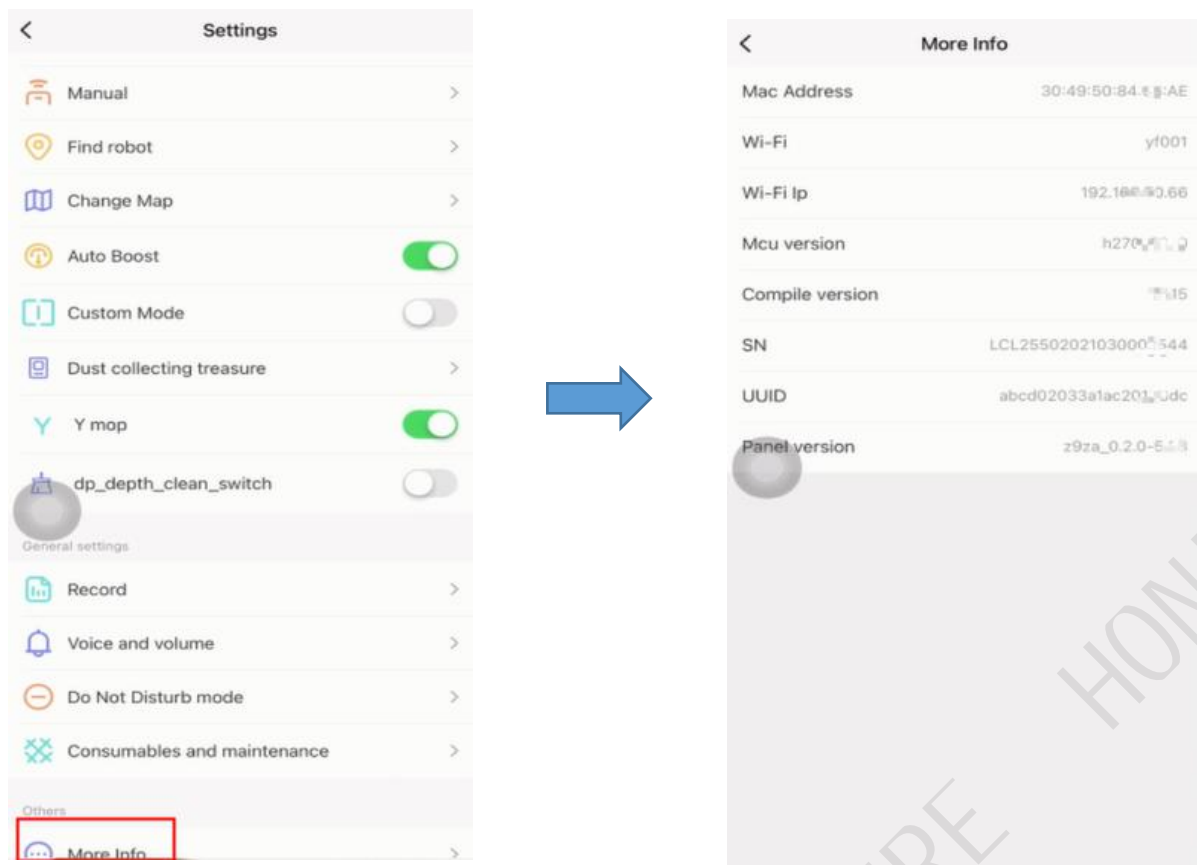
### ⑫ Consumables and maintenance

You can check the usage of consumables here.



### ⑬ More info

If the robot fails, you can check the virtual ID here and tell the after-sales service if needed.



### ⑭ Rename the robot

